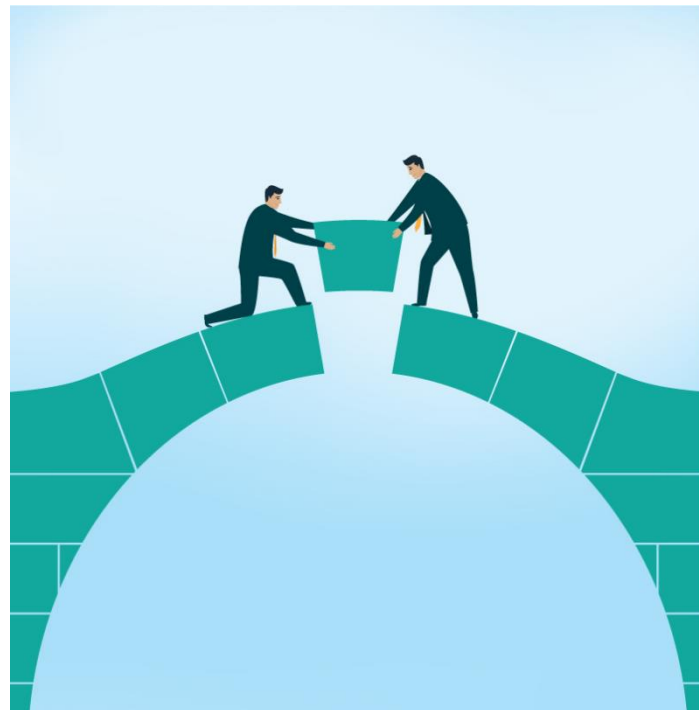


Year 11 - 12 Bridging the Gap

GCSE → A Level

A Level Geography

Summer 2022



Course Breakdown

<u>Paper 1:</u>	<u>Paper 2:</u>	<u>Paper 3</u>	<u>Coursework non examined assessment (NEA):</u>
<i>Assessing the physical Geography content (Unit 1) & skills</i> <i>2 hours 15 minutes</i> <i>105 marks</i> 30%	<i>Assessing the human Geography content (Unit 2) & skills</i> <i>2 hours 15 minutes</i> <i>105 marks</i> 30%	<i>Synoptic investigation of a Geographical issue (unit 3)</i> <i>2 hours 15 minutes (including 20 minutes of reading time)</i> <i>70 marks</i> 20%	<i>Independent Investigation</i> <i>70 marks</i> <i>Internally assessed & externally moderated.</i> <i>3000–4000 words</i> 20%

Year 1

Coasts

Tectonics

Diverse Places

Globalisation

NEA

Year 2

The Water Cycle

The Carbon Cycle

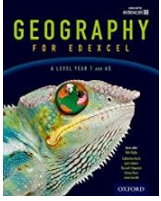
Superpowers

Health, Human rights and Intervention

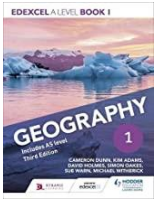
Paper 3 Preparation and Skills

NEA

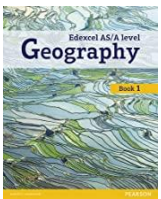
Recommended Reading



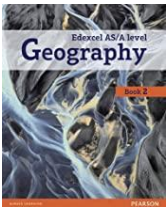
Geography for Edexcel A Level Year 1 and AS Student Book (A Level Geography for Edexcel 2016) by Bob Digby, Lynn Adams, et al.



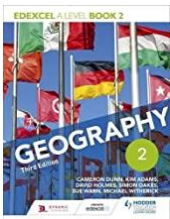
Edexcel A level Geography Book 1 Third Edition by Cameron Dunn , Kim Adams, et al.



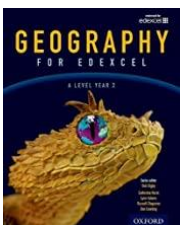
Edexcel GCE Geography AS Level Student Book and eBook (Edexcel Geography A Level 2016) by Lindsay Frost, Viv Pointon, et al.



Edexcel GCE Geography Y2 A Level Student Book and eBook (Edexcel Geography A Level 2016) by Lindsay Frost, Daniel Mace, et al.



Edexcel A level Geography Book 2 Third Edition by Cameron Dunn, Kim Adams, et al.



Geography for Edexcel A Level Year 2 Student Book (A Level Geography for Edexcel 2016) by Bob Digby, Russell Chapman, et al.

Scholarly Articles

Ball, M. (2021) The role of tectonic setting and country development on volcanic risk. *Routes* 1(3): 263-274.

Globalization at a critical juncture? *Cambridge Journal of Regions, Economy and Society*, Volume 11, Issue 1, March 2018, Pages 3–16, <https://doi.org/10.1093/cjres/rsy002>

Karen Akerlof, Michelle Covi and Elizabeth Rohring (2017) Communicating Sea Level Rise <https://doi.org/10.1093/acrefore/9780190228620.013.417>

Websites

A level Powerpoints to support knowledge and quiz yourself <https://geographyeducationonline.org/a-level>

Keep up to date with the news and download the BBC App on your phone on visit the website <https://www.bbc.co.uk/news>

YouTube Clips

The Carbon Cycle <https://www.youtube.com/watch?v=xKMTaJCJ6Ww>

The Water Cycle <https://www.youtube.com/watch?v=IEetgzTfBx8>

Coasts <https://www.youtube.com/watch?v=Ak2vhd8IZ6E>

Superpowers https://www.youtube.com/watch?v=zQV_DKQkT8o&list=PLEbUo-BtusZu4sHwnjbl1BH6sLoWmJOXe

Globalisation https://www.youtube.com/watch?v=rB_YBpWENmU

Tectonics - [Natural Hazards: Volcanoes | A-level Geography | OCR, AQA, Edexcel - YouTube](#)

Channels

The Curious Geographer <https://www.youtube.com/channel/UCv3KwaZkZPCPT7NI6KYnnew>

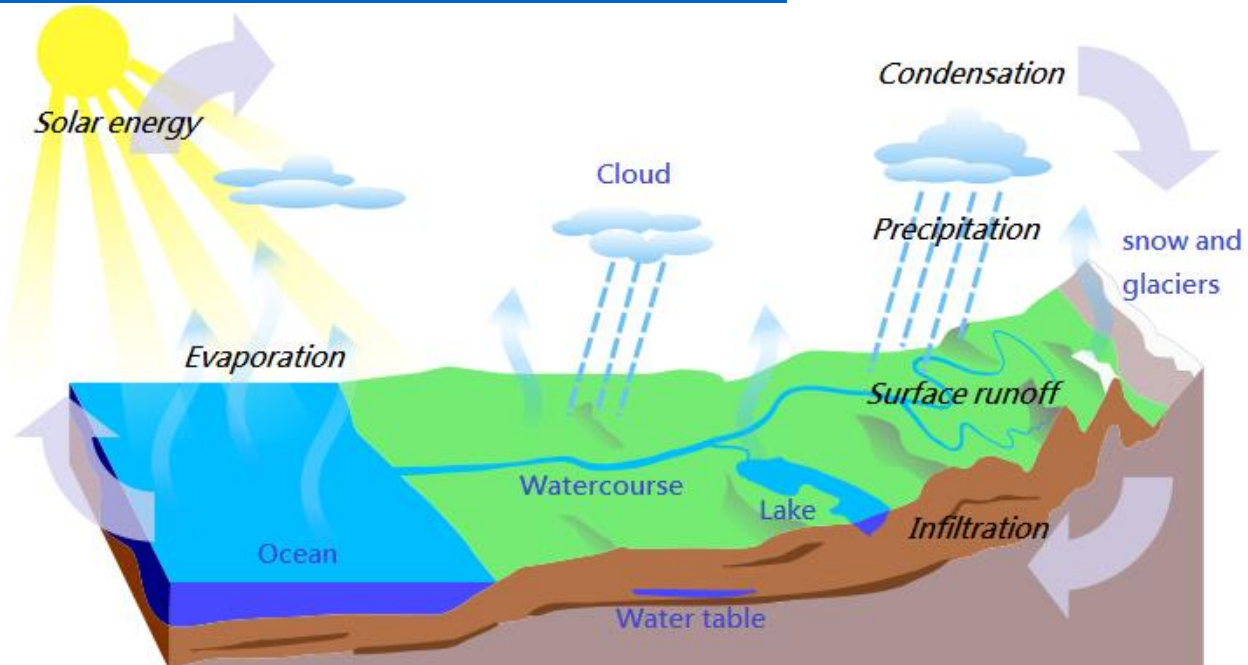
A level Geography Channel <https://www.youtube.com/channel/UCiHVQ1xe-xKxqQkilgqQxXg>



TASK 3

Water Cycle

http://quagroup.com/wp-content/uploads/Water_Cycle-en.png



The drainage basin and hydrological cycle flow map image

1. You are to create an A3 poster with a **detailed** annotated diagram explaining the Water cycle (as shown above in basic detail) and how it works. However, this also has to have the drainage basin drawn into your image as the two are linked.

The poster should be clear and in extensive detail. Within this you need to incorporate key words that are defined (a good idea is to have flaps with the key term on one side and then the definition under it). Make it bright bold and clear so it is an easy and “fun” revision tool.

Answer the questions below:

1. What affect can humans have on the hydrological (water) cycle? Can you find 2 ways human can affect the water cycle in a place.



2. What is a storm hydrograph and what factors can impact it? This is back to GCSE geography so should be an easier example. (Physical and human)

3. Can you find two ways that might climate change might impact the hydrological cycle? Think about what increases temperature might do to the flow map you made in part A.

TASK 4

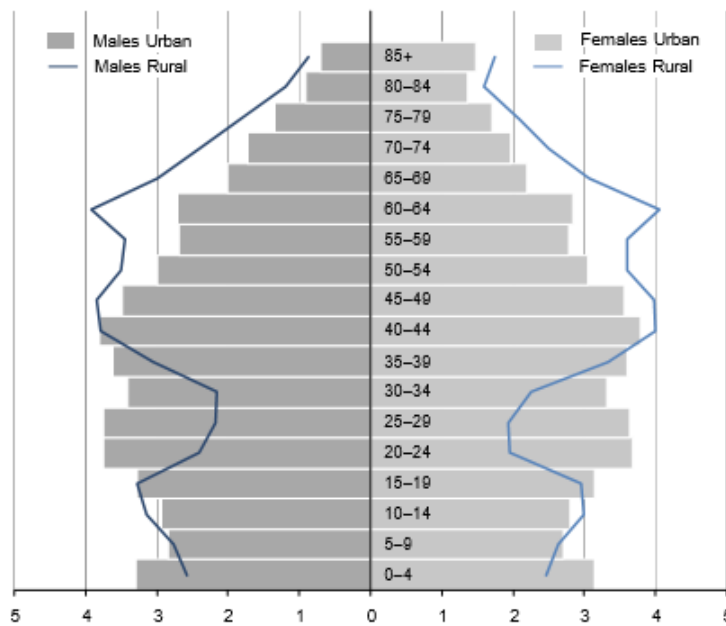
Diverse Places

Demographic is the study of populations. It includes the make-up of that population in terms of gender, ethnicity and age profile. In each area not only will the population size be different but the demographics too. This might be due to historic reasons of where cultures settled, the availability of jobs and housing in an area, the cost of living the availability of universities etc..

1. Look at the population pyramid below and try to explain why the population in urban areas vs rural areas varies.

Figure 52 Population pyramid for England: by area type, mid-2009

England
Percentage of rural/urban population



Source: 2009 Middle Layer Super Output Area Mid-Year Population Estimates, Office for National Statistics

The age/sex ratio of the people of England living in urban and rural areas.



2. Look at – Look at your local area and the demographic breakdown using <https://parallel.co.uk/population/#9.4/53.4569/-2.651/0/32> and <https://datashine.org.uk/#table=QS606EW&col=QS606EW0017&ramp=RdYlGn&layers=BTTT&zoom=12&lon=-0.1500&lat=51.5200>. Create a 1 page report on what the demographics are like in your area and if possible suggest reason for this.



TASK 4

Globalisation

1. Create an annotated photo of either your family car or your living room with the various places where the parts/ features were manufactured.



OR

2. Choose an example of a TNC and create a timeline of events since their foundation as a company. What have been the benefits that the company has brought to the countries involved. Examples could be Nike, Mattel, Disney or Tesco.

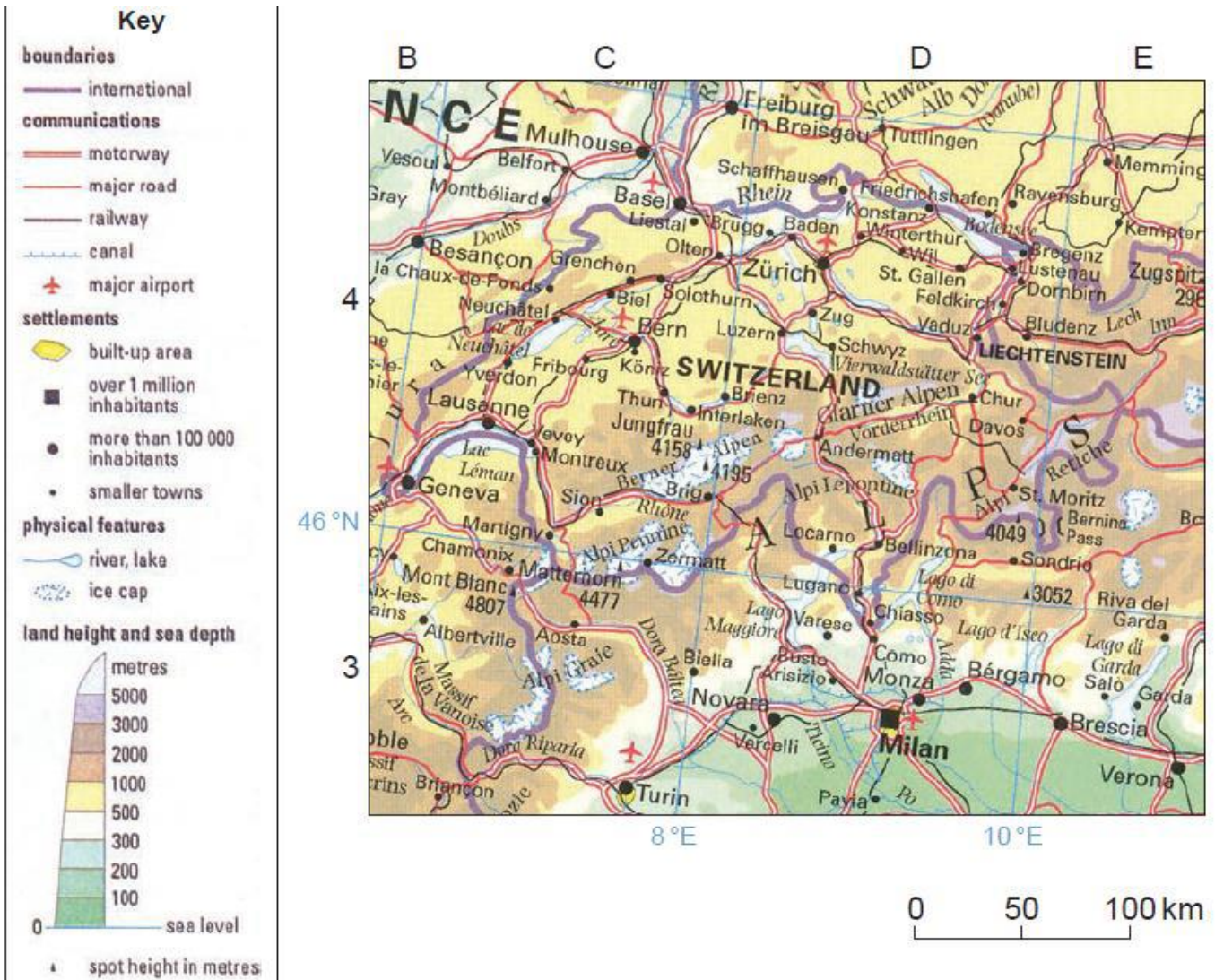
3. Being switched off

Many countries in the world are unable to access global networks. Research why some countries might be more switched off than others think about human and physical reasons that have caused them being switched off.



Task 5

Skills



Suggest why Switzerland is popular for Winter sports

What is the name and height of the highest mountain on this map? _____

What is the distance from Milan to Turin? _____



In which square would you find Basel? _____

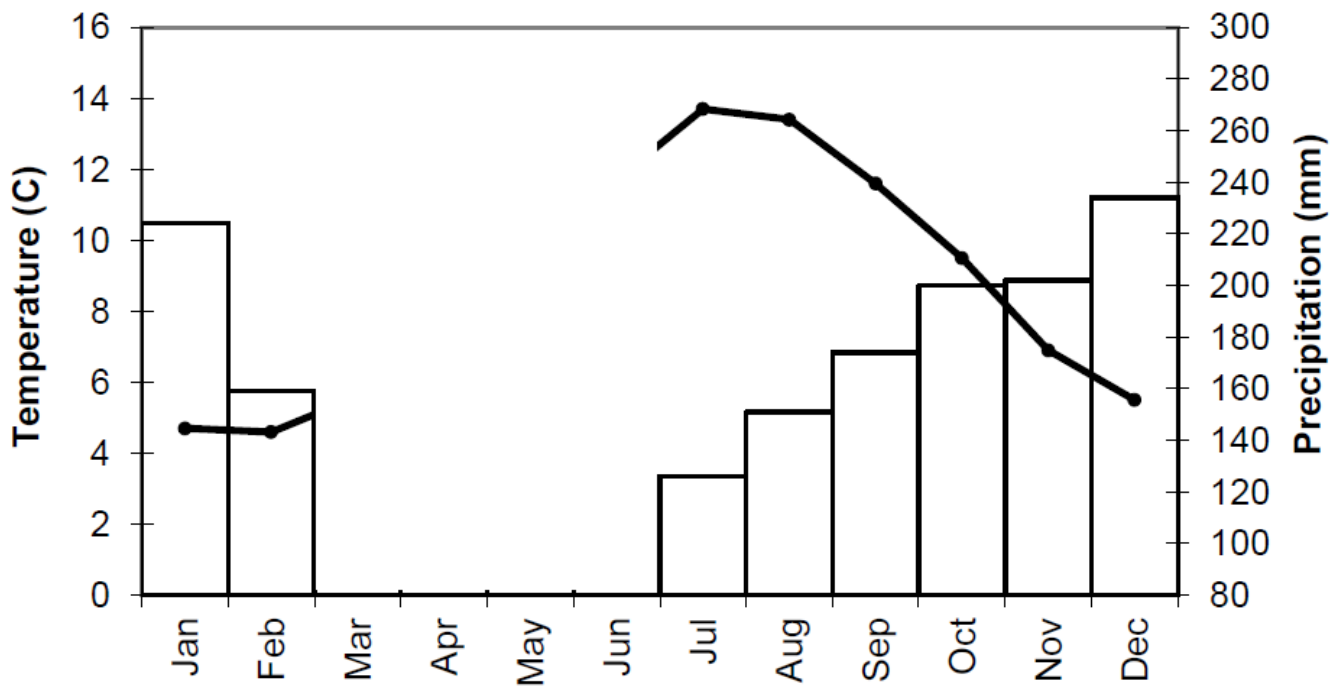
How high above sea level is Zurich? _____

What mountain range is shown on this map? _____

Fill in the blanks based on the figures given below:

Month	Precipitation	Temperature
March	148	6
April	108	7
May	99	9.6
June	105	11.8

TIP: Always use the same shading as they use on the paper, whether this is solid or some sort of pattern.



Write the number of the statement on the graph in the correct place:

1. Evapotranspiration is at its highest
2. Rainfall is about 2mm higher than the previous month
3. Temperatures are at their lowest



In your own words, describe how temperature and precipitation changes throughout the year:
